



**HARO®**  
Quality Flooring

# HARO PARQUET ProNamic

*The smart parquet floor for active individuals*

# HARO PARQUET ProNamic – The smart parquet floor for active individuals

The perfect floor for those who want to install a covering in their fitness room that ideally supports their athletic activities while also being a visual highlight. Our parquet will transform your fitness area into a feel-good area.

- Ideal for public facilities, fitness studios, sports clubs, private fitness rooms
- Absorbs more than 50 percent of impact force
- Provides effective protection for spine and joints
- Intercepts falls to perfection and reduces the risk of injury
- Absorbs sound really effectively
- High level of slip resistance with sealed surfaces
- Easy to install
- Wide range
- Available with the surface varieties permaDur finish and naturaLin *plus* natural oil
- Easy care with HARO clean & green floor care series
- Skirtings perfectly matched to the floor styles available from the HARO product range



High shock absorption



7-times more dimensionally stable than solid wood.  
Installation with absolutely no gaps.





# Surfaces



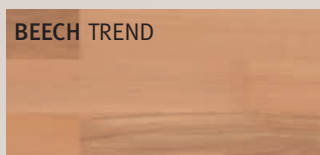
**permaDur**  
HIGH FINISH

Tough and abrasion-resistant

## Range

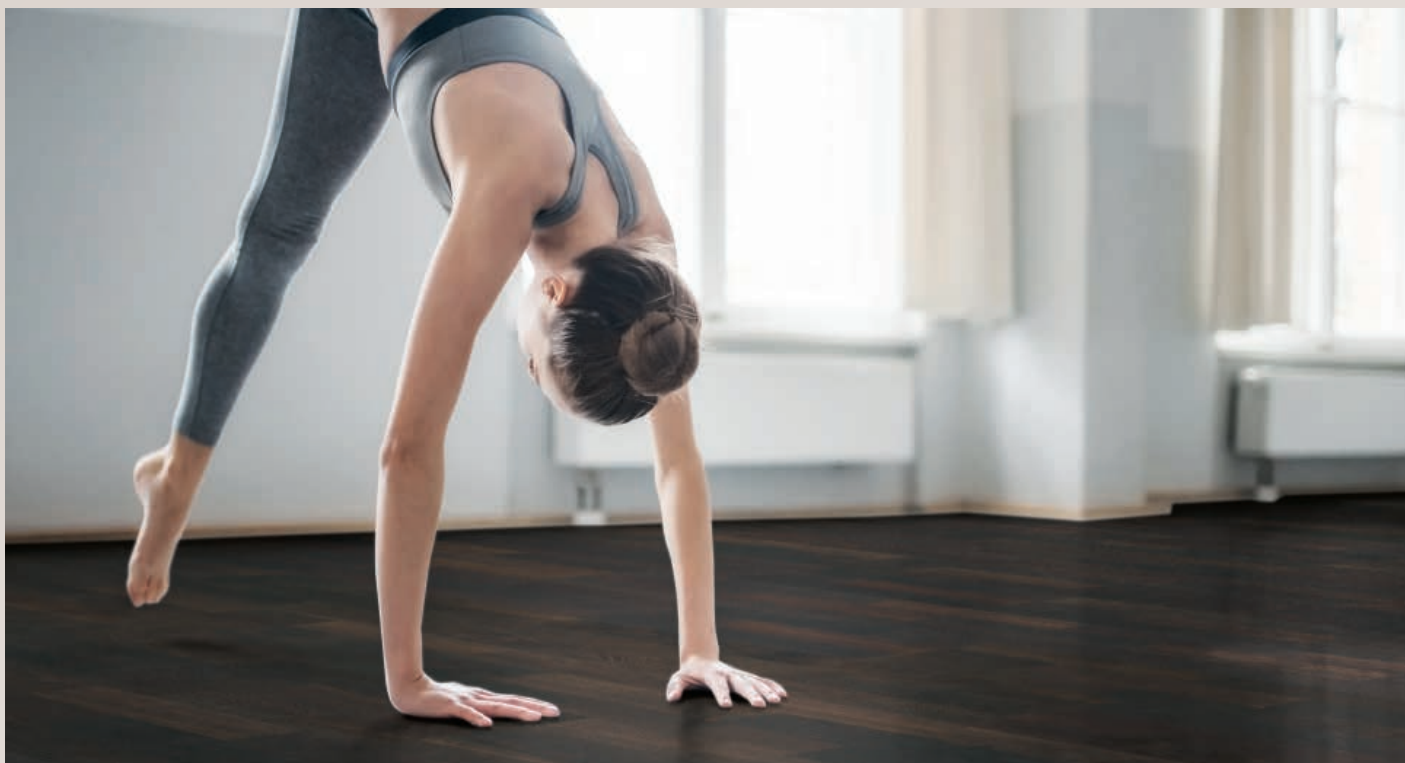
**Wood types with a permaDur surface:**

HARO PARQUET longstrip



permaDur finish with smooth flush-fit square edges help reduce the risk of injury

Other Longstrip wood species with smooth flush-fit square edges and permaDur finish are available to special order. Min quantity 2000m<sup>2</sup>. Further articles with permaDur finish without smooth paint edges from the HARO price list product range can be purchased on a commission basis. No warranty is accepted for these articles.







**naturaLin***plus*  
NATURAL OIL FINISH

Breathable and natural

## Wood types with a naturaLin plus surface:

### HARO PARQUET longstrip

**OAK EXQUISIT**  
brushed

**AMERICAN WALNUT TREND**

### HARO PARQUET Plank 1-Strip

**OAK EXCLUSIV**  
brushed

**AMERICAN WALNUT**  
UNIVERSAL

**OAK TREND**  
brushed

**BEECH FAVORIT**  
brushed

**OAK MARKANT**  
brushed

**BEECH UNIVERSAL**  
brushed

**OAK TERRA**  
brushed

**SMOKED OAK FAVORIT**  
brushed

**OAK SAUVAGE**  
brushed

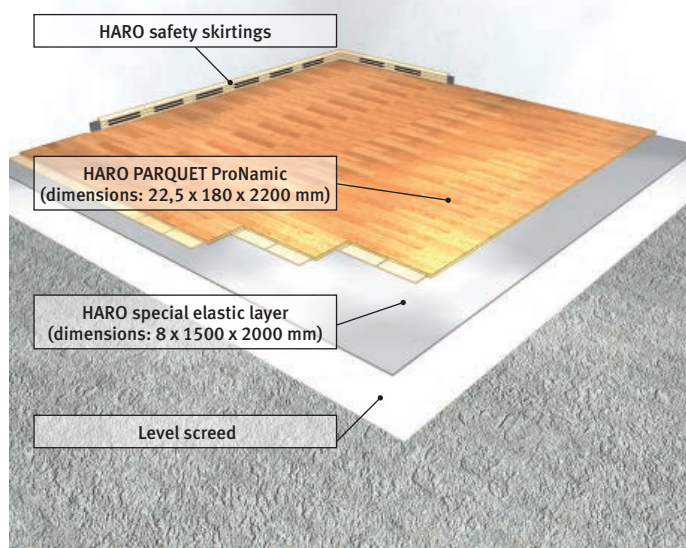
**LARCH UNIVERSAL**  
BRUSHED

**AFRICAN OAK TREND**  
brushed

**WENGE FAVORIT**

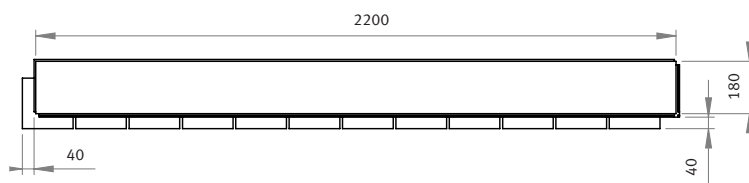
**AMERICAN WALNUT MARKANT**

# Construction



The HARO ProNamic parquet floor must be installed on a level subfloor in accordance with DIN 18202: 1997-04, Table 3. For maximum tolerances see table.

## Dimensions



Values in mm

## Properties as per DIN 18032-2, April 2001

Shock absorption: 57.00 %

Standard deformation: 2.6 mm

Deformation control: 7.00 %

Ball rebound: 100 %

Rolling load: 1,500 N

Overall installation height: 30.5 mm

Parquet dimensions: 2,200 x 180 x 22.5 mm

Dimensions of special elastic layer: 2000 x 1500 x 8 mm

Special elastic layer per m<sup>2</sup>: 0.8 kg/m<sup>2</sup>

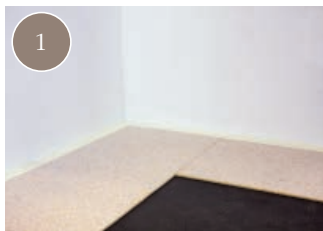
Weight of parquet module per m<sup>2</sup>: 11.44 kg/m<sup>2</sup>

Warranty in years: 2

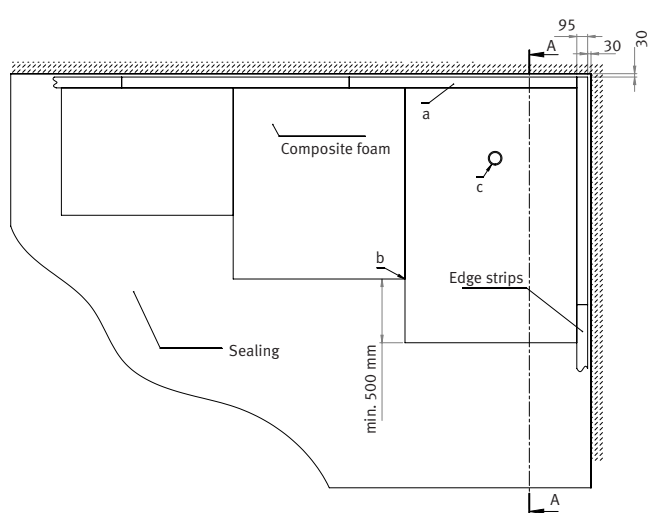
Antibacterial: yes

Fire protection: C<sub>fl</sub>-S<sub>1</sub>

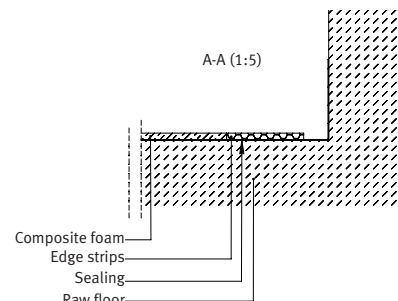
# Installation



- Firmly glue edge strips to the subfloor every 25-30 cm with dispersion adhesive
- Lay composite foam with an offset without cross joints
- Lay composite foam. Offset joints. Do not overlap. For device sockets, leave max. 10 mm room
- Install polystyrene strips flush the wall



Glue the boards to the wall with platelets – distance to wall 15 mm

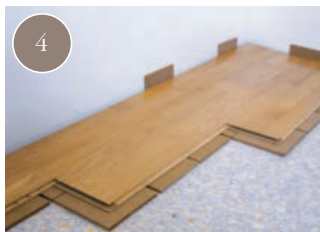
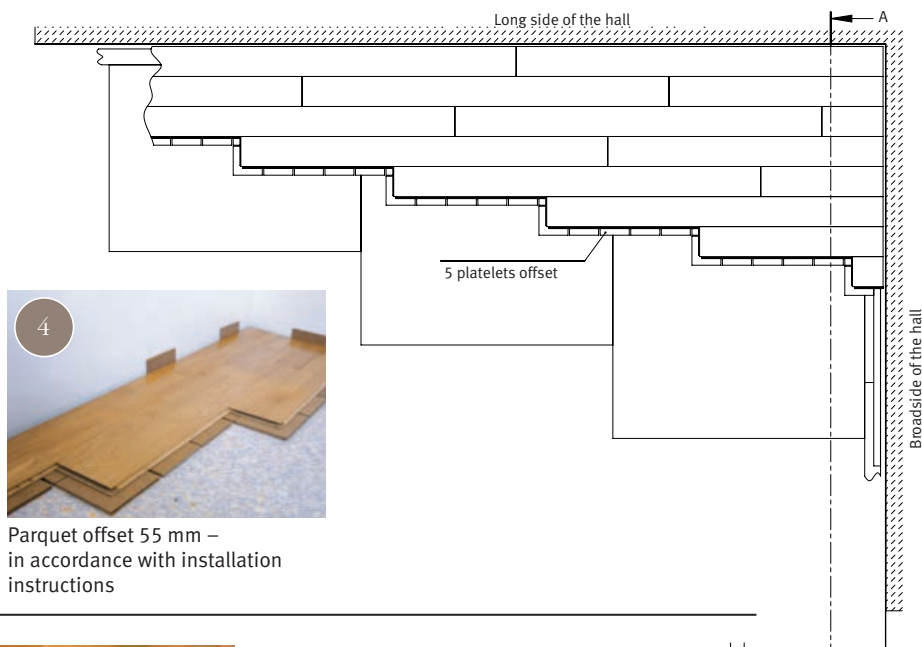


Gluing:

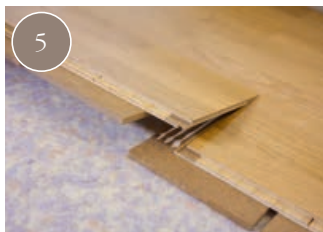
- Apply glue to the load distribution platelets
- 3 glue lines are applied generously across the entire length of the load distribution platelets. Apply a little less at the edge joint.

## Please note!

It must be ensured that the glue is applied in three generous lines. Otherwise there is a danger of breaking with load.



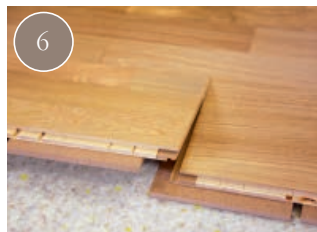
Parquet offset 55 mm – in accordance with installation instructions



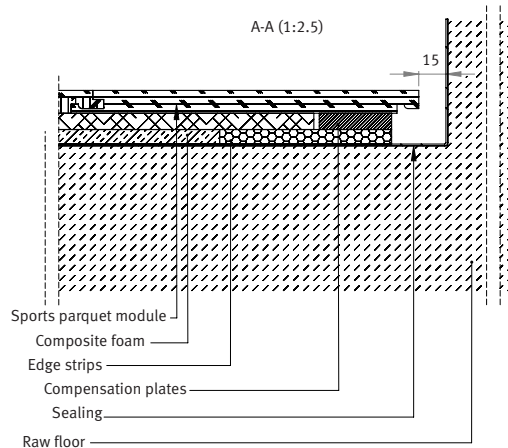
Lay the parquet boards

## Note:

Place weights on every newly installed row of parquet and always move to the newest row while installing.



Fit the parquet boards together





Hamberger Flooring GmbH & Co. KG  
Postfach 10 03 53, 83003 Rosenheim, Germany, tel +49 8031 700-0, fax +49 8031 700-199, e-mail info@haro.com  
[www.haro.com](http://www.haro.com)